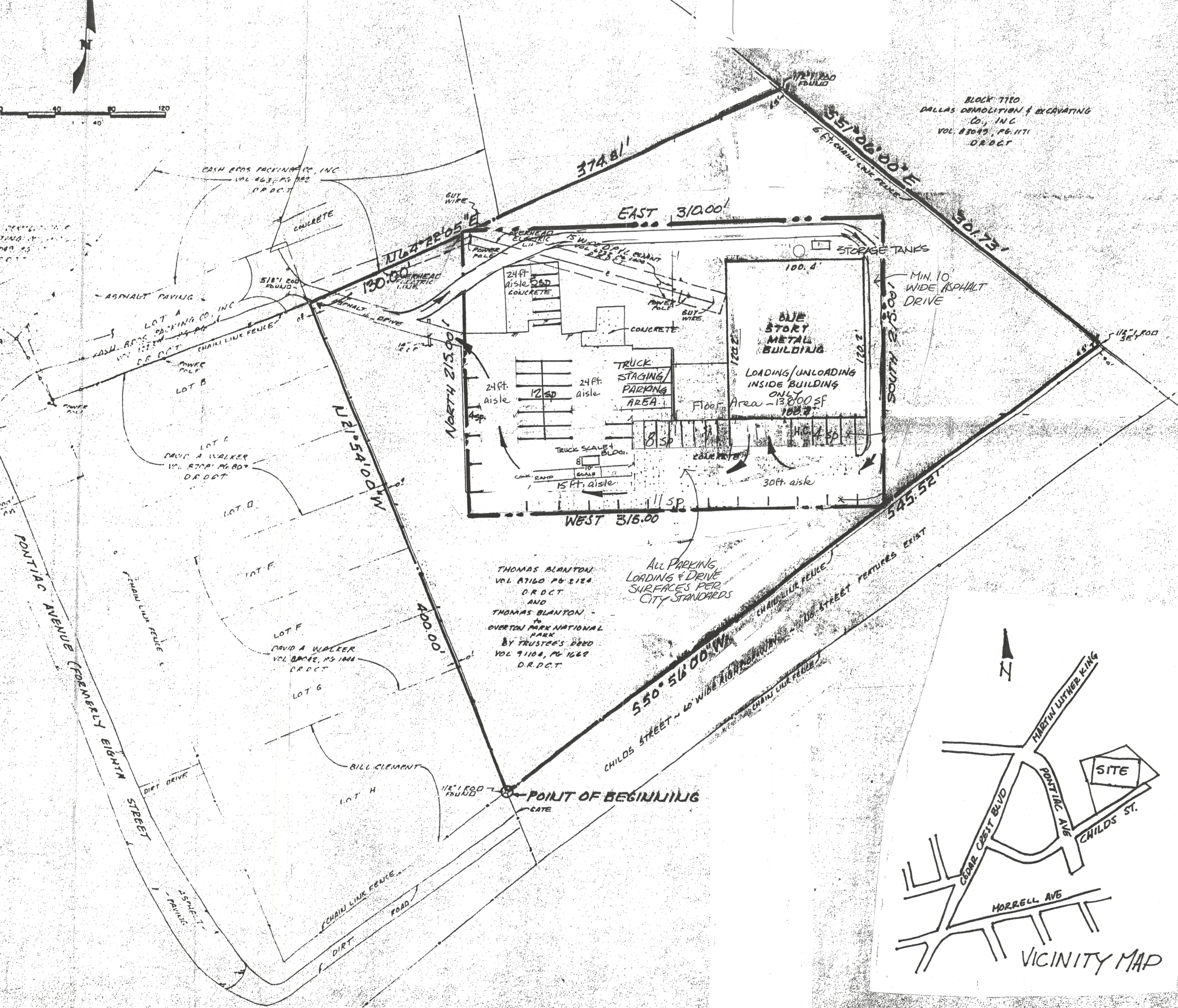


NOTE: LOT 'A' SHOWN HEREON WAS GRANTED AS ACCESS TO THE 3.565 ACRE TRACT BY THE DEED RECORDED IN VOL. 87160 PG. 2124 D.R.C.T.



BLOCK 7700  
DALLAS DEMOLITION & EXCAVATING  
CO., INC.  
VOL. 83047, PG. 1111  
D.R.C.T.

THOMAS BLANTON  
VOL. 87160 PG. 2124  
D.R.C.T.  
AND  
THOMAS BLANTON  
IN  
OVERTON PARK NATIONAL  
PARK  
BY TRUSTEE'S DEED  
VOL. 91104, PG. 1687  
D.R.C.T.

CHILD'S STREET - 40' WIDE ASPHALT DRIVE  
CHAMPLAIN FENCE  
100' STREET FEATURES EXIST

SUP AREA: 66,650 sf  
PARKING AREA: 26,010 sf  
40,640 sf

Req. Parking @ 1/1000 of area - parking area 41 spaces  
Provided Parking 44 spaces

051774  
26016  
APPROVED BY  
CITY COUNCIL

JUN 08 2005  
*Shady Goff*  
City Secretary

SPECIFIC USE PERMIT NO. 1583

Approved  
City Plan Commission  
4-14-05

2034-112

**SITE PLAN**

LOCATED IN  
**BLOCK 3/5907 FOREST AVENUE  
AND EIGHTH STREET INDUSTRIAL  
ADDITION**  
to  
DALLAS, DALLAS COUNTY, TEXAS

